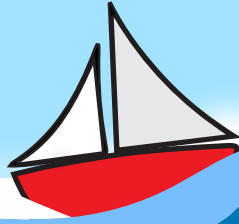


HOW LONG UNTIL IT'S DECOMPOSED?

IF ONE BOTTLE OF WATER MADE IT INTO THE SEA, HOW LONG WOULD IT TAKE TO FULLY DECOMPOSE?



CARDBOARD
2 MONTHS



TOILET ROLL
1 MONTH



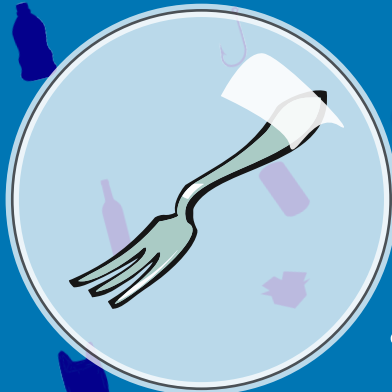
PLASTIC BAGS
10-20 YEARS



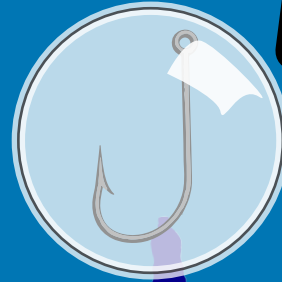
CIGARETTES
10 YEARS



DRINKS CANS
200 YEARS



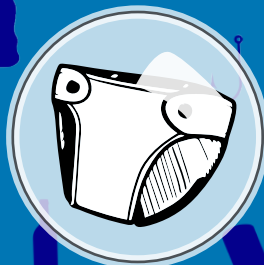
PLASTIC CUTLERY
100-1000 YEARS



FISH HOOKS
600 YEARS



GLASS
4000 YEARS



DIAPERS
450 YEARS



SOME PLASTICS
NEVER



Brought to you by:

